

# EBrick

## Rack Mounted LV Battery System

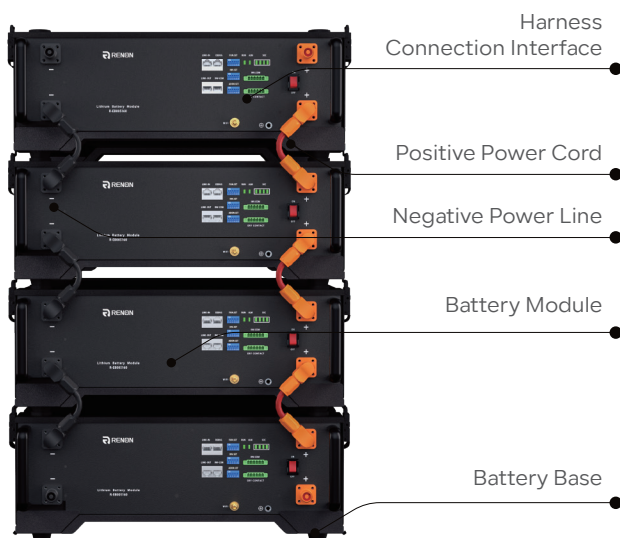
**Modular Design and Easy Installation:** EBrick's rack-mount design allows for customizable and simple installation, with the flexibility to connect multiple units in parallel. This reduces installation time and costs.

**Wi-Fi Connectivity and App Control:** EBrick features Wi-Fi connectivity, enabling users to remotely monitor and control the system via a dedicated app. This enhances user experience with real-time monitoring and efficient system management.

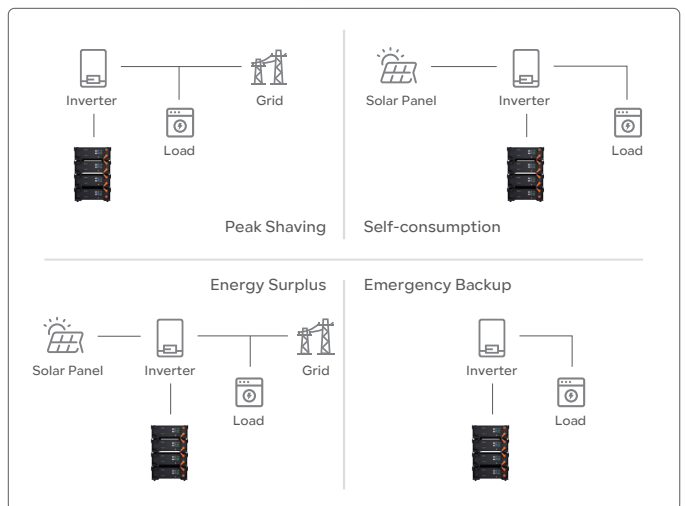
**Stable LiFePO4 Battery Technology:** EBrick uses reliable lithium iron phosphate (LiFePO4) batteries, offering up to 8000 cycles. Its efficient battery management system ensures high performance and safety.



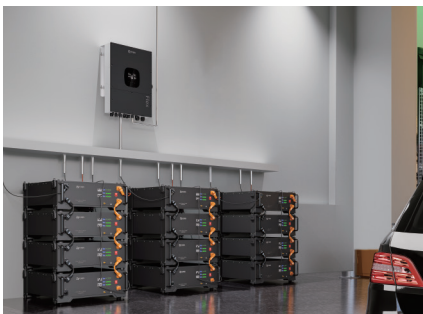
### Product Details



### System Layout



### Application Scenario



Battery Energy Storage		General Parameters	
Battery Chemistry	LiFePO4	Scalability	Max. 31 systems in parallel
Cell Capacity (Ah)	100	Storage Conditions	-20°C ~ 55°C(0°C ~ 35°C Recommended) Up to 90%RH, non-condensing Initial SoC: 50%
Nominal Energy (kWh)	5.12	Operating Temperature	Charge: 0°C ~ 50°C Discharge: -20°C ~ 50°C
Output Power (kW)	4.8	Cooling	Natural Cooling
Default Voltage (V)	51.2	Max. Altitude	4000m / 13123ft
Voltage Range (V)	43.2 ~ 59.2	Cycle Life	8000 Cycles
Max. Operation Current (A)	95	Communication	RS485, CAN, WiFi
Primary Overcurrent Protection (A)	98@10S	System Characteristic	
Secondary Overcurrent Protection (A)	120@30mS	Battery Model	R-EB005161
Max. Charging Voltage (V)	58.4	Battery Compliances	UL1973, UL9540A, IEC 62619, UN 38.3 CEI 0-21, UKCA, EN-61000, EN-62311
Discharge Cut-off (V)	43.2	Installation Method	Rack Mounting
Recommended Charging Voltage (V)	56.8	Installation Scene	Indoor
Dimension (W*D*H)	440*420*132mm 17.3*16.5*5.2in	IP Rating	IP20
Net Weight (Approximate)	45kg 99.2lb	Warranty [1]	10 Years

[1] Please refer to the warranty letter for details

## Packaging & Shipping Details

